

## General Specifications for

# BLODGETT

*Zephyre*

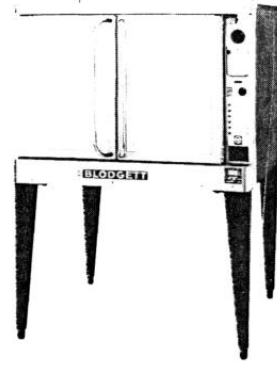
### RESTAURANT HOTEL TYPE OVENS

EF-111-RHT

EZE-1-RHT

### ELECTRIC RACK TYPE CONVECTION

### BROILING AND ROASTING OVENS



EF-111-RHT/EZE-1-RHT

Finish illustrated

Solid stainless steel front—black finish

**EXTERIOR CONSTRUCTION:** Standard exterior finish shall consist of #430 Stainless Steel front, #3 finish and a dull heat resistant black lacquer upon a corrosion resistant primer on the top, sides and back of oven sections.

Door front and back frames to be No. 16 gauge (1.48 mm) S/S. Oven front including doors, to be No. 24 gauge (0.59 mm) S/S. Top, sides and back to be No. 24 gauge (0.71 mm) Cold Rolled Steel. Welded (optional top and sides in No. 24 gauge (0.59 mm) S/S, #3 finish) on 1½" x 1½" x 1/8 (38 mm x 38mm x 3.2 mm) angle frame. The legs shall be of No. 16 gauge (1.42 mm) press formed steel sheet welded to a No. 11 gauge (3.02 mm) steel mounting plate, painted black and shall be adjustable for leveling.

**INTERIOR CONSTRUCTION:** Standard baking compartment interior, including baffle to be of No. 14 gauge (1.73 mm) Porcelain Enameled steel (dimensions 29" (737 mm) wide, 20" (508 mm) high and 21¼" (540 mm) deep to front of baffle.

**INSULATION:** Top, back, bottom and sides to be insulated with 1" (25.4 mm) high temperature mineral fiber sheet.

**DOORS AND HANDLES:** A handle mounted on each door shall operate both doors independently. A friction door braking system shall be provided. Doors shall be side mounted and shall open independently to the sides in a horizontal plane up to 140° with No. 24 gauge (0.59 mm) S/S fronts and backs.

**RACKS AND RACK SUPPORTS:** Standard racks and rack supports shall be of a bright chrome plated steel wire, capable of holding 11 racks with a minimum of 1-5/8" (41 mm) spacing. Standard sections shall have 5 wire racks, 20-7/8" x 27-3/4" (530 mm x 704 mm).

**THERMOSTATS:** Each section shall be equipped with an electric, direct acting thermostat which shall have toggle-type snap-action mechanism and integral OFF-ON switch.

**ELECTRICAL COMPONENTS:** Each section shall have two sets of 3 tubular type heaters (208-220, 240, 440 or 480 VAC) with a total rating of 18.5 KW. Each section shall

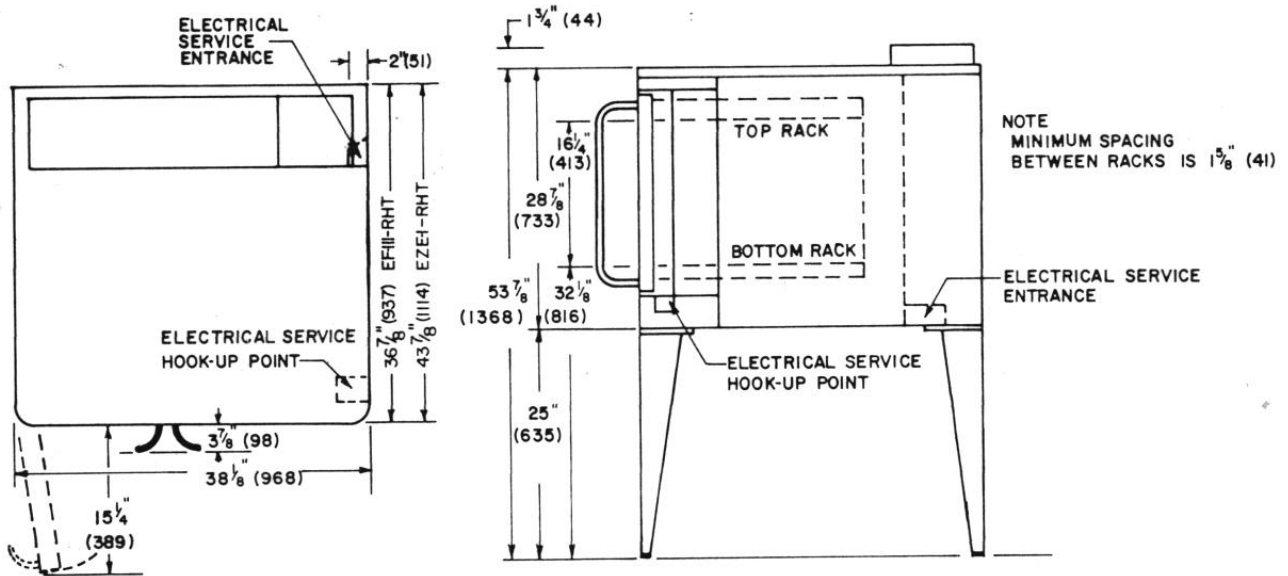
have the capability of variable input to the heaters of 7.5 KW, 10 KW or 17.5 KW. Each section shall be equipped with 3/4 HP blower motor with automatic thermal overload protection. Blower and heating elements shall be interconnected for simultaneous operation. Each section to have Oven Ready indicating light and blower switch.

**LISTINGS:** All EF-111-RHT and EZE-1-RHT series ovens will be listed by Underwriters Laboratories and the National Sanitation Foundation.

#### OPTIONAL EXTRAS AT ADDITIONAL COST:

- \_\_\_ Stainless Steel top and/or sides (24 gauge (0.59 mm), 430, #3 finish)
- \_\_\_ Decorator Color on top, sides and back. Available Decorator Colors: Vassar Yellow, Mint Frost, Mandarin Red, Copper, Turquoise Blue, Ice Blue and Platinum Gray.
- \_\_\_ Stainless Steel Baking Compartment Lining (16 gauge (1.48 mm), 430)
- \_\_\_ Perforated back panel (black or colored)
- \_\_\_ Perforated back panel (stainless steel)
- \_\_\_ Extra racks
- \_\_\_ Base Cabinets exterior to match oven w/aluminized interior
- \_\_\_ Open stand with stainless steel legs and shelf w/rack guides
- \_\_\_ Open Stand (Legs & Shelf black) w/rack guides
- \_\_\_ Open Stand (Legs and Shelf Decorator Color) w/rack guides
- \_\_\_ 440 or 480 volt (specify), 3 phase circuit
- \_\_\_ Swivel casters (two locking)
- \_\_\_ 25" (635 mm) Legs, Stainless Steel
- \_\_\_ 25" (635 mm) Legs, Decorator Color

# Zephaire MODEL EF-111-RHT / EZE-1-RHT CONVECTION OVEN



ALL DIMENSIONS ARE BOTH INCHES AND MILLIMETERS

	EF-111-RHT	EZE-1-RHT
Floor space	38-1/8" (968 mm) wide x 36-7/8" (937 mm) deep	38-1/8" (968 mm) wide x 43-7/8" (1114 mm) deep
K.W. per hour	18.5	18.5
Motor single speed	3/4 H.P., 1725 RPM	3/4 H.P., 1725 RPM
Minimum entry clearance	34" (864 mm) (crated) 28-7/8" (733 mm) (uncrated)	34" (864 mm) (crated) 28-7/8" (733 mm) (uncrated)
Approx. Shipping weight (crated)	480 lbs. (218 kg)	525 lbs. (238 kg)
Crate Size	43" x 46" x 34" (1092 mm x 1168 mm x 864 mm)	43" x 52" x 34" (1092 mm x 1321 mm x 864 mm)

If oven is on casters add 5 1/2" (140 mm) to all height dimensions.

## AMPERAGE RATINGS OF ZEPHAIRE EF-111-RHT and EZE-1-RHT ARE:

KW	VOLTS (60 HZ)	PHASE	AMPERES
18.5	208-220	1	89
18.5	208-220	3	48-48-51
18.5	240	1	78
18.5	240	3	41-41-45
18.5	440	3	25-25-25
18.5	480	3	22-22-22

OVER ONE HUNDRED YEARS OF  
THE G. S. **BLODGETT** CO., INC.

BURLINGTON VERMONT 05402

DISTRIBUTED IN CANADA BY:  
GARLAND COMMERCIAL RANGES, LTD.  
1177 KAMATO ROAD — MISSISSAUGA, ONTARIO, L4W 1X4, CANADA